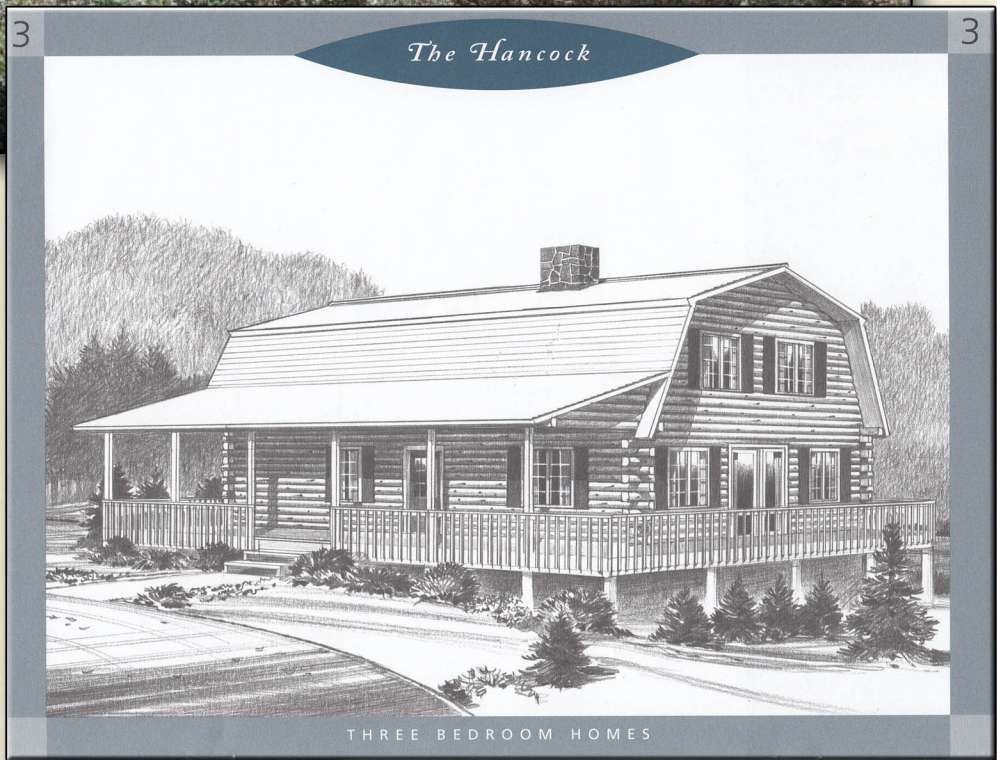




The Hancock



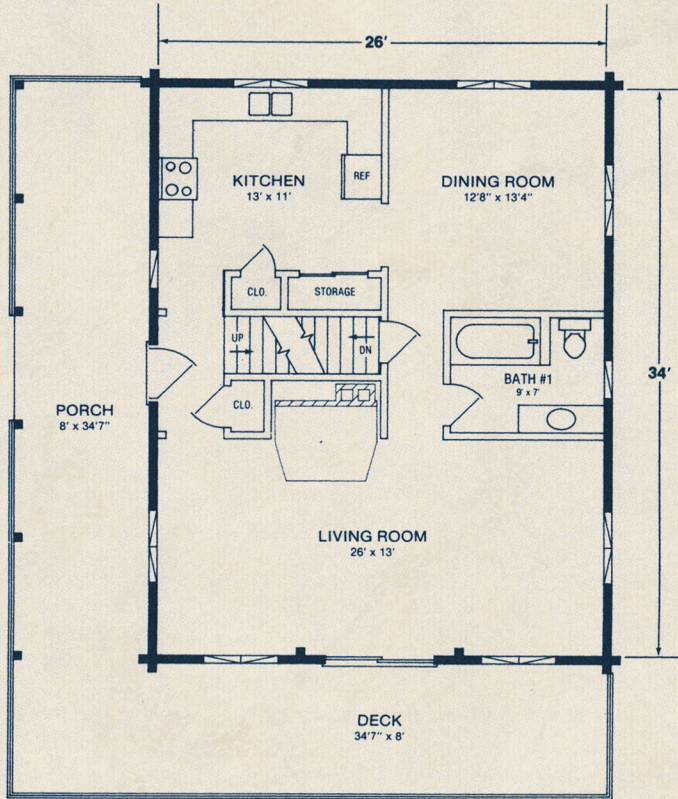
Northeastern Log Homes

info@northeasternlog.com 800-624-2797 www.northeasternlog.com

*Artist's rendering, photography and optional design ideas may vary from the standard model. Please always consult the standard floorplan and refer to the Premier Series material list as to what is included.



The Hancock



Premier Home Series

26' x 34' Size

1,840 Square Feet

Three Bedrooms

Two Full Baths

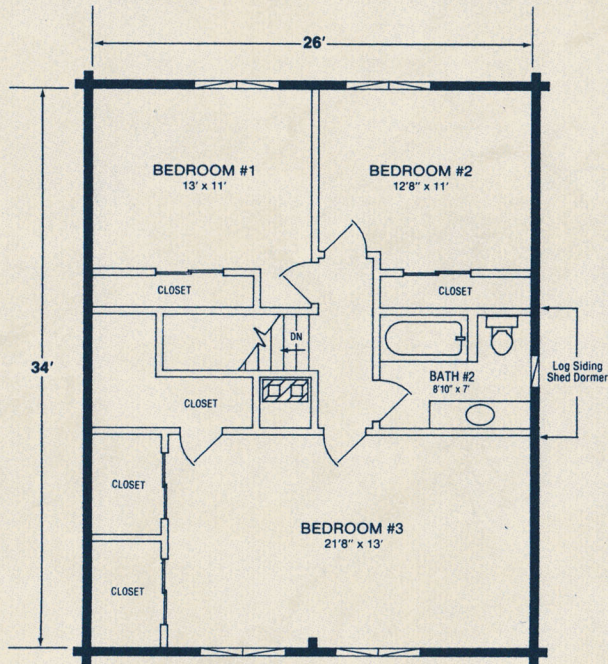
Pricing information
available for download
from our website

Optional Design Ideas:

Remove the wall area between the kitchen/dining area for a much more open concept floorplan

Move the refrigerator over to the area above the stairs...now this can give terrific space to generate an eat-in breakfast bar for the kitchen

The Bedroom #3 area can easily be converted into a dedicated second floor master suite! Extend the rear dormer over the Bedroom #3 area and add a master bath and walk-in closet to that right hand side.

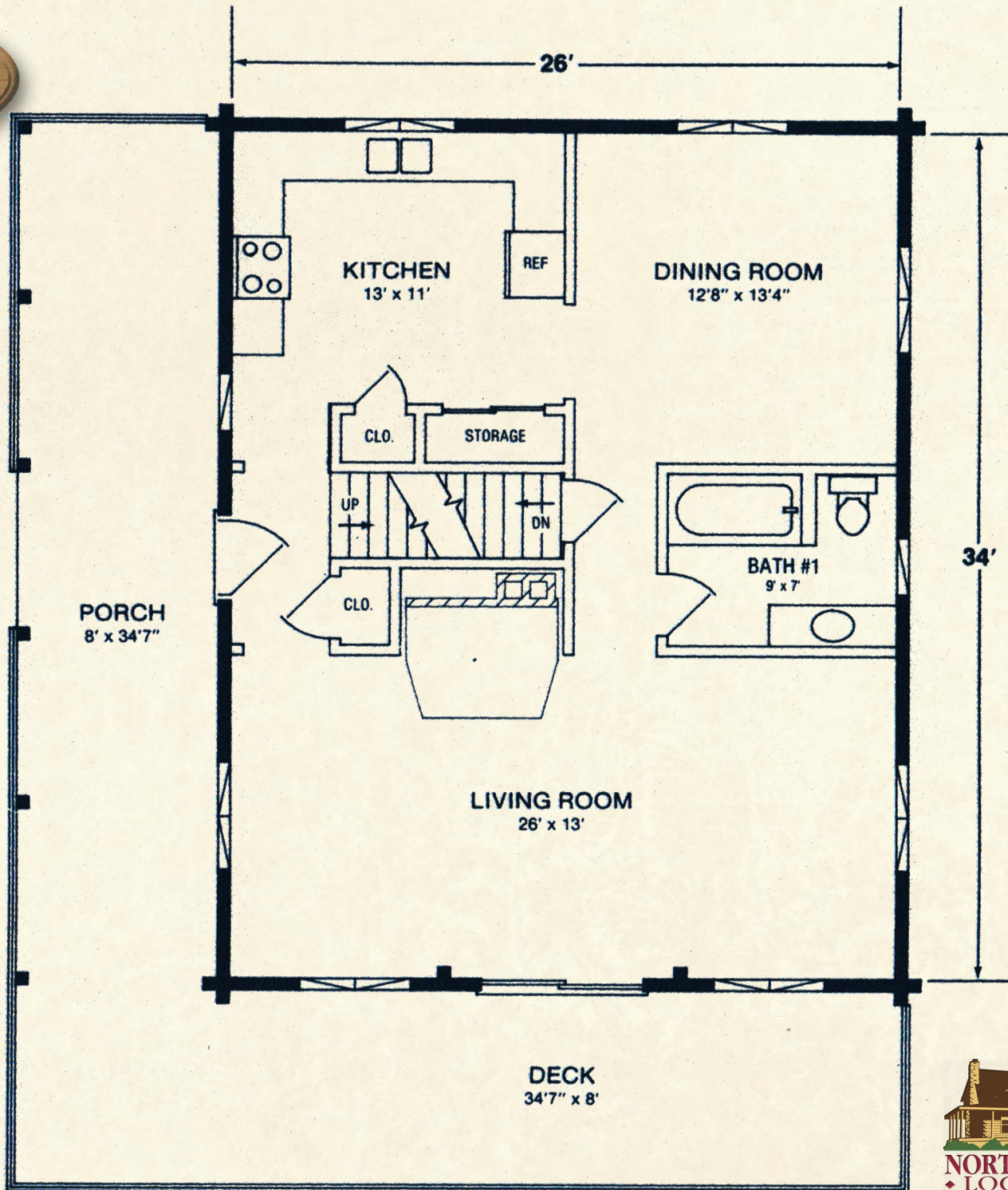


Northeastern Log Homes

info@northeasternlog.com 800-624-2797 www.northeasternlog.com

*Artist's rendering, photography & optional design ideas may vary from the standard model. Please always refer to the standard floorplan and consult the Premier Home Series Material List as to what is included. All plans, photography and images copyright NLH 2016

The Hancock



The Hancock

